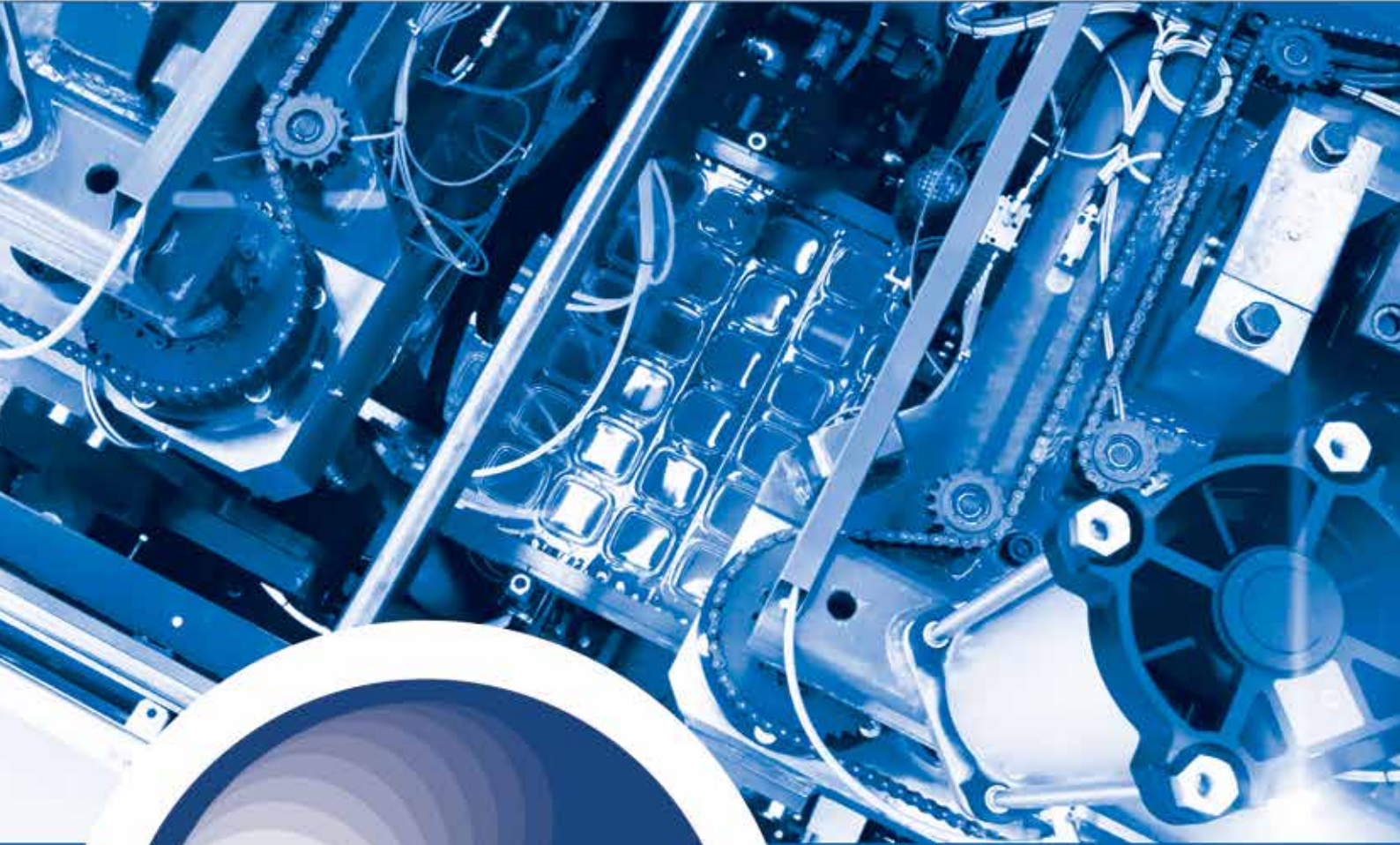


# FLEX 92

STEEL RULE CUTTING MACHINES





# FLEX 92

ONE machine  
for EXTENSIVE  
mould matching



*"Of things that exist, some are in our power and some are not in our power. Those things that are in our power, are by nature free, not subject to restraint" (philosopher Epictetus).*

*This approach has been of great inspiration to WM for developing the new FLEX 92, a new steel-rule-die machine designed to provide the thermoformers more freedom of choice and at the same time reflecting the company's 35 years of continuous technological innovation.*



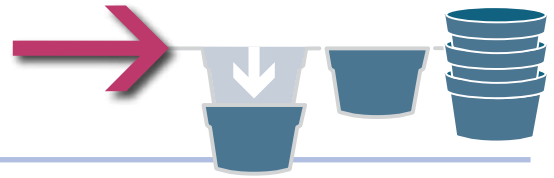
## FLEX 92 MEANS:

- ONE machine for an extensive number of mould matching
- No major mould modifications needed
- Movable clamping frame, plug assist and electrical driven ejector "Ready-to-form" technology
- Breakthrough steel rule die technology improving parallelism stability, cutting precision and steel rule die longevity.
- Constant quality, high performance and extreme flexibility
- Ceramic heating elements with individual temperature controllers for precise setting
- Easy operating and maintenance



## TECHNICAL DETAILS

Vacuum and high pressure forming with steel rule cutting in the forming tool + in-line cutting press + in-line stacking



FORMING STATION	inches	mm
Max. mould dimension	36,2" x 27,5"	920 x 700
Max. forming depth	6,3"	160



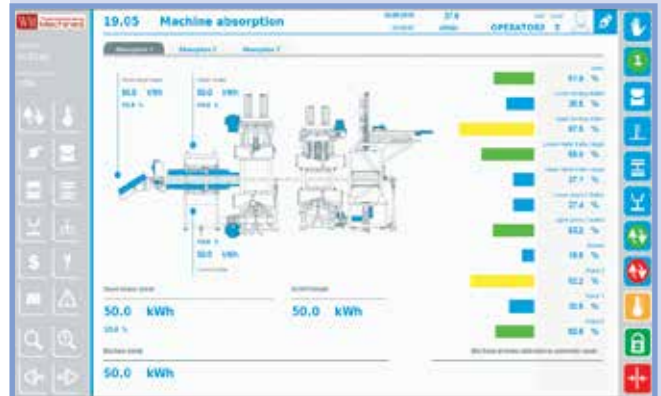
### UPWARD STACKING SYSTEM

- Low investment and high speed
- A/B stacking
- Precise linear guide to prevent vibration



### UPWARD STACKING SYSTEM + 2 OR 3 AXES ROBOT

- High flexibility and speed
- A-B-C stacking
- No limitation on product design and mold lay-out
- Solid frame to prevent vibration
- Fast tool change to reduce machine downtime
- Better process stability



### DRIVERS AND CONTROL SYSTEM

- The system is based on an extremely reliable and well tested B&R industrial PC and Drives
- Remote Machine Viewer interface ("WM Viewer"), which allows real-time remote monitoring of the machine's functions via smart phone, tablet or PC
- MLS System (Machine Learning System) for initial self-setting of the cycle parameters to optimize machine sequencing and increase machine output and product quality
- High speed data exchange to optimize at the best cycle times
- Forming and cutting force monitoring
- Driver analysis to overview working condition
- Display for energy consumption
- High speed modem connection in order to facilitate technical after sales support





WM THERMOFORMING MACHINES SA  
Via Dei Pioppi 3 . CH 6855 Stabio . Switzerland  
Tel (+41) 91 6407050 . Fax (+41) 91 6407059

*sales@wm-thermoforming.com*  
[www.wm-thermoforming.com](http://www.wm-thermoforming.com)

